

High-Flow Manifolds and Up-Pipes Kit 2017+ GM 6.6L Duramax L5P

(116112500)

Installation Guide

DISCLAIMER OF LIABILITY

Performance products can increase horsepower above and beyond factory specifications. Additional horsepower creates more stress on the drive-train components, which could result in drive-train failure.

Note regarding emissions-related, non-E.O.-legal products: THESE PRODUCTS ARE LEGAL IN CALIFORNIA ONLY FOR RACING VEHICLES THAT MAY NEVER BE USED, OR REGISTERED OR LICENSED FOR HIGHWAY OR OFF-ROAD USE.

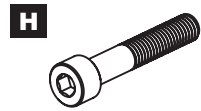
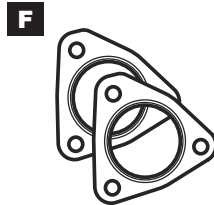
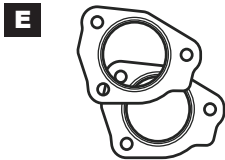
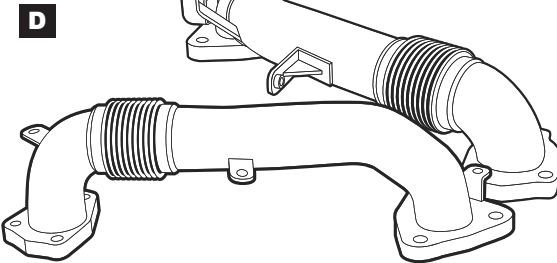
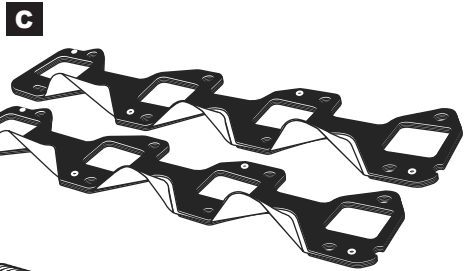
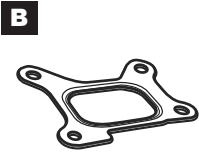
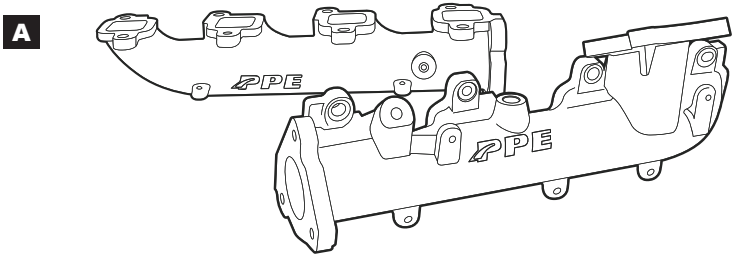
This agreement sets forth the terms and conditions for the use of PPE products. The installation of this product indicates that the Buyer has read and understands this agreement and accepts the terms and conditions. PPE (Pacific Performance Engineering) Inc., its distributors, employees, and dealers (the "Seller") shall not be responsible for the product's proper use and service. The buyer hereby waives all liability claims. The Buyer hereby acknowledges no reliance on the Seller's skill or judgment to select or furnish goods suitable for any particular purpose and that there are no liabilities which extend beyond the description on the face hereof, and the Buyer hereby waives all remedies or liabilities expressed or implied, arising by law or otherwise (including without any obligation of the Seller with respect to fitness, merchantability and consequential damages), or whether or not occasioned by the Seller's negligence. The Seller disclaims any warranty and expressly disclaims any liability for personal injury or damages. The Buyer acknowledges and agrees that the disclaimer of any liability for personal injury is a material term for this agreement and the Buyer agrees to indemnify the Seller and to hold the Seller harmless from any claim related to the item of equipment purchased. Under no circumstances will the Seller be liable for any damages or expenses by reason of use or sale of any such equipment. The Seller assumes no liability regarding the improper installation or misapplication of its products. It is the installer's responsibility to check for proper installation and if in doubt, contact the manufacturer. The Buyer is solely responsible for all warranty issues from the manufacturer.

LIMITATION OF WARRANTY

The Seller gives Limited Warranty as to description, quality, merchantability, and fitness for a particular purpose, productiveness, or any other matter of Seller's product sold herewith. The Seller shall not be responsible for the products proper use and service and the Buyer hereby waives all rights other than those expressly written herein. This warranty shall not be extended, altered or varied except by a written instrument signed by Seller and Buyer.

Limited lifetime warranty on all PPE cast aluminum products, and PPE Transmission Coolers. Three (3) year limited warranty on PPE Manifolds and Up-Pipes Kits, and OEM-Length Up-Pipes. One (1) year limited warranty on all other PPE products from the date of sale to original buyer and limited solely to the parts contained within the products kit. All products that are in question of Warranty must be returned prepaid to the Seller and must be accompanied by a dated proof of purchase receipt. All Warranty claims are subject to approval by Seller. Under no circumstances will the Seller be liable for any labor charged or travel time incurred in diagnosis for defects, removal, or re-installation - of this product or any other contingent expenses. Under no circumstances will the Seller be liable for any damage or expenses incurred by reason of the use or sale of any such equipment. In the event that the buyer does not agree with this agreement: the buyer may promptly return this product, in a new and unused condition in its original packaging, with a dated proof of purchase to the place of purchase within ten (10) days from date of purchase for a full refund. The installation of this product indicates that the buyer has read and understands this agreement and accepts its terms and conditions.

High-Flow Manifolds and Up-Pipes Kit



CONTENTS

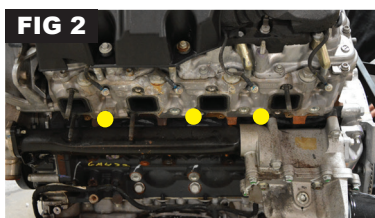
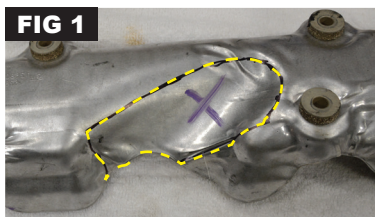
- A: (2) Manifolds (L and R)
- B: (1) EGR Gasket
- C: (2) Manifold Gaskets
- D: (2) Up-Pipes (L and R)
- E: (2) Upper Up-Pipe Gaskets
- F: (2) Lower Up-Pipe Gaskets (L and R)
- G: (6) Spacers
- H: (6) M8 Socket Head Cap Screws
- I: (9) M6 Flange Head Hex Screws



Installation shown on a static engine to depict detail.

PREPARATION

- Step 1.** Vehicle off. Engine cool.
- Step 2.** Remove both stock exhaust manifolds, all heat shielding, sensor, both stock up pipes and the stock down pipe.
- Step 3.** Trim passenger side heat shield as shown (FIG 1).
- Step 4.** Remove the 3 lower rear driver side and 3 lower rear passenger side factory studs from the cylinder head where the factory exhaust manifolds bolt on. Reference location in picture. (FIG 2)



INSTALLATION

- Step 1.** Install the passenger side PPE Exhaust Manifold Gasket and PPE Exhaust Manifold on the engine block.
- Step 2.** Place the PPE EGR gasket between the Manifold and the EGR stand on the top of the passenger side Manifold. Use the factory hardware to secure the EGR and Manifold.
- Step 3.** Install PPE Spacers (**G**) and PPE M8 Bolts (**H**) to replace the removed factory studs. Tighten to secure.



Install factory spacers and factory nuts on the ends of the remaining factory studs. Tighten to secure.

High-Flow Manifolds and Up-Pipes Kit

Step 4. Reinstall the factory sensor in the Exhaust Manifold.



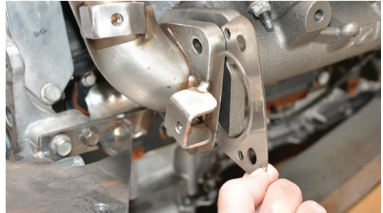
Step 5. Install the passenger side PPE Up-Pipe Gasket between the upper Up-Pipe flange and the back of the engine block. Install factory hardware to secure. Tighten.

Repeat for driver side.



Step 6. Place the lower passenger side PPE Up-Pipe gasket between the Exhaust Manifold and the Up-Pipe flange. Install factory hardware secure. Tighten.

Repeat for driver side.



Step 7. Reinstall factory down pipe

Step 8. Reinstall driver and passenger side heat shields.

Step 9. Place supplied Manifold and Up-Pipes decal on the engine shield in the designated area for reference in future smog testing



Installation complete.



PPEpower.com