



SHOP BY VEHICLE



0

INSTALL INSTRUCTIONS FOR 10-1002



PRINT

BEFORE YOU START

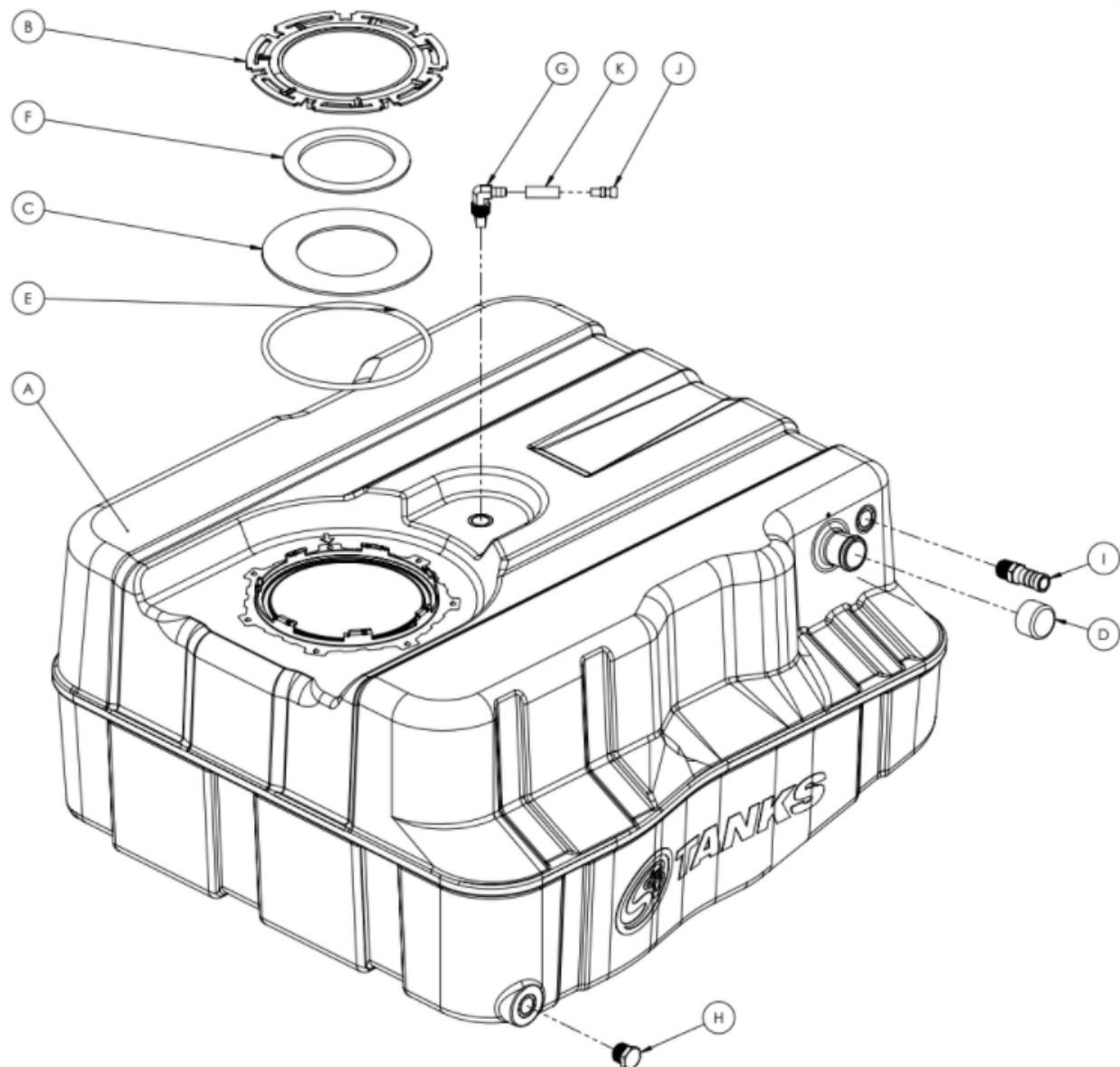
- Please read the entire product guide before proceeding
- Ensure all parts are present.
- If you are missing any parts, please call or text us at (909)-675-1313
- Do not work on your vehicle while the underbody components are hot.
- Make sure the vehicle is in park or the parking brake is set if you plan on working on the ground. If working on a lift, make sure the vehicle is lifted safely and securely.

REQUIRED TOOLS

- 15mm Socket
- 19mm Socket
- Ratchet
- 10" or 12" driver extension
- Flathead Screwdriver or 8mm Nut Driver
- Mallet or Hammer
- Transmission or Floor Jack

ENTER TO WIN





| ITEM NO. | PART NUMBER | DESCRIPTION | QTY. |
|----------|-------------|--|------|
| A | 10-1002 | HIGH CAPACITY REPLACEMENT TANK | 1 |
| B | TI0005-00 | LOCKING RING FOR 10-1002 | 1 |
| C | TI0006-00 | ADAPTOR ROUND PLATE | 1 |
| D | TI1092-00 | TANK FILLER COVER | 1 |
| E | TI1103-00 | 22.25" VOR-N50.275X6.999 | 1 |
| F | TI1120-00 | ADAPTOR RING GASKET | 1 |
| G | TI1122-00 | ROLL OVER VENT FITTING, 1/2" NPT | 1 |
| H | TI1125-00 | .5" PIPE PLUG | 1 |
| I | TI1128-00 | BARBED VENT FITTING, STRAIGHT, 3/4" BARB TO 1/2" NPT | 1 |
| J | TI1141-00 | ROLLOVER VENT CAP | 1 |
| K | TI1169-02 | 5/16" FUEL HOSE 2" | 1 |

STEP 1

Raise the vehicle up on a lift to working height.

- Installation can be completed without a lift.
Make sure the vehicle is safely parked with the parking brake set.



STEP 2

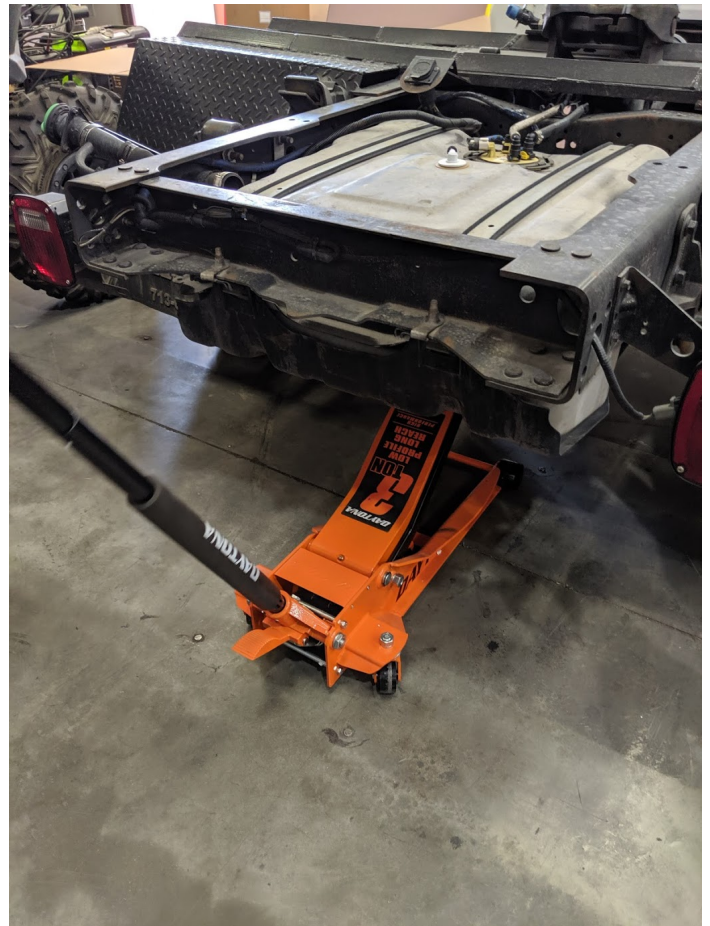
Disconnect the vent and fill hose from the filler/vent neck assembly.



STEP 3

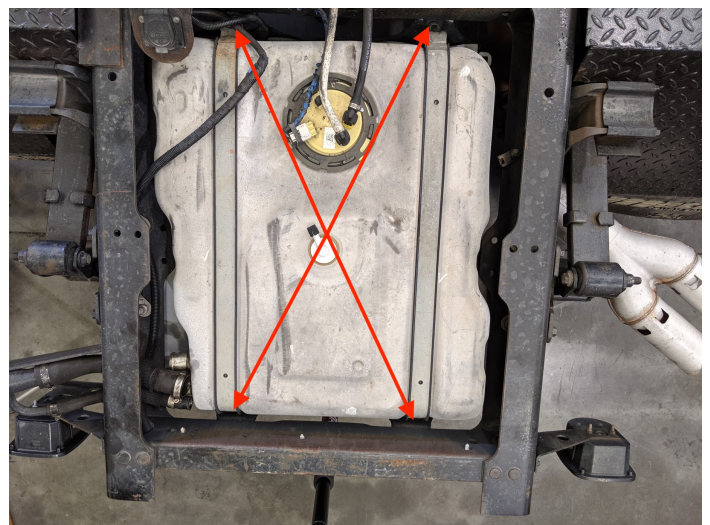
Center the hydraulic jack underneath the fuel tank and raise until the jack contacts the tank. Caution: Support the tank properly as remaining fuel can slosh and cause the tank to shift.

- Lift Install: Hydraulic Jack
- Floor Install: Floor jack with added support to properly hold tank



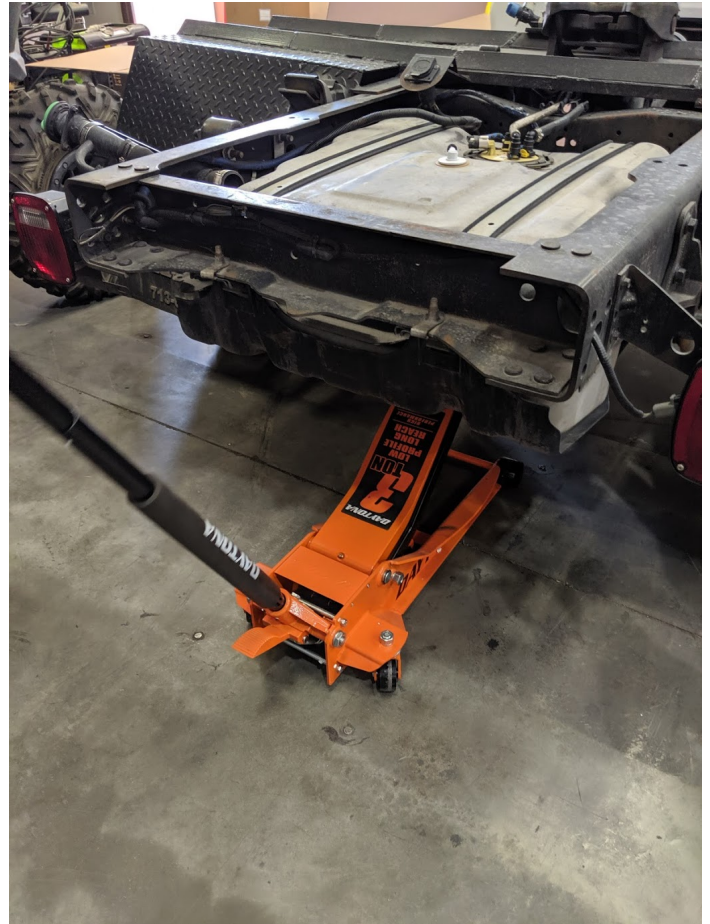
STEP 4

Remove the 4 bolts that fasten the skid plate to the frame. Make sure you only remove the 15mm that hold the skid plate to the frame. You will also see two 19mm bolts that hold the fuel tank in the skid plate. These will be removed later.



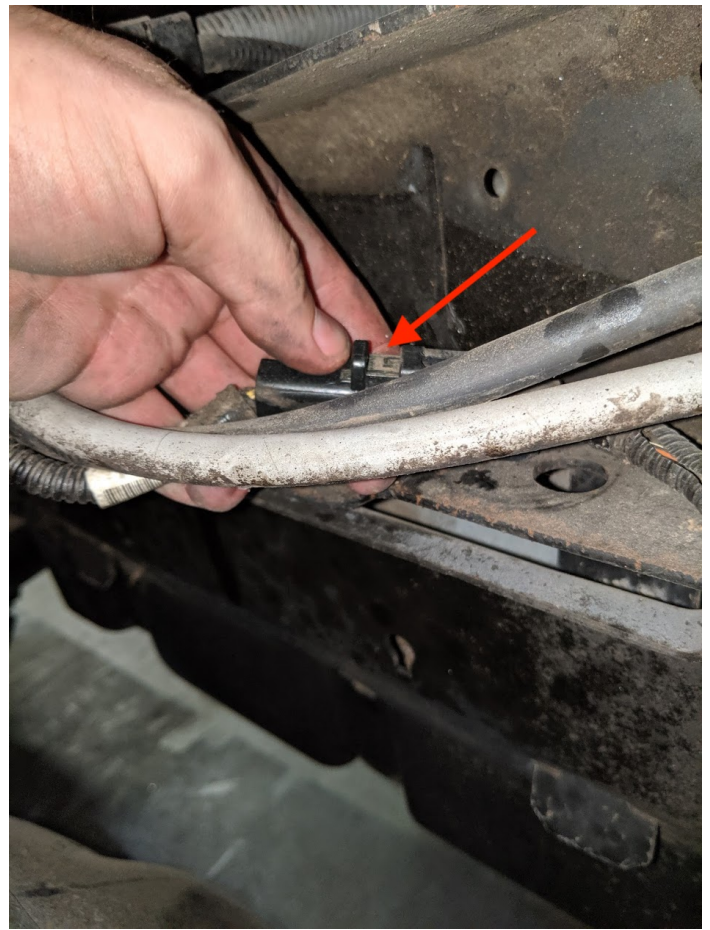
STEP 5

Lower the tank 6" until you can easily reach the fuel sending unit to disconnect all connectors.



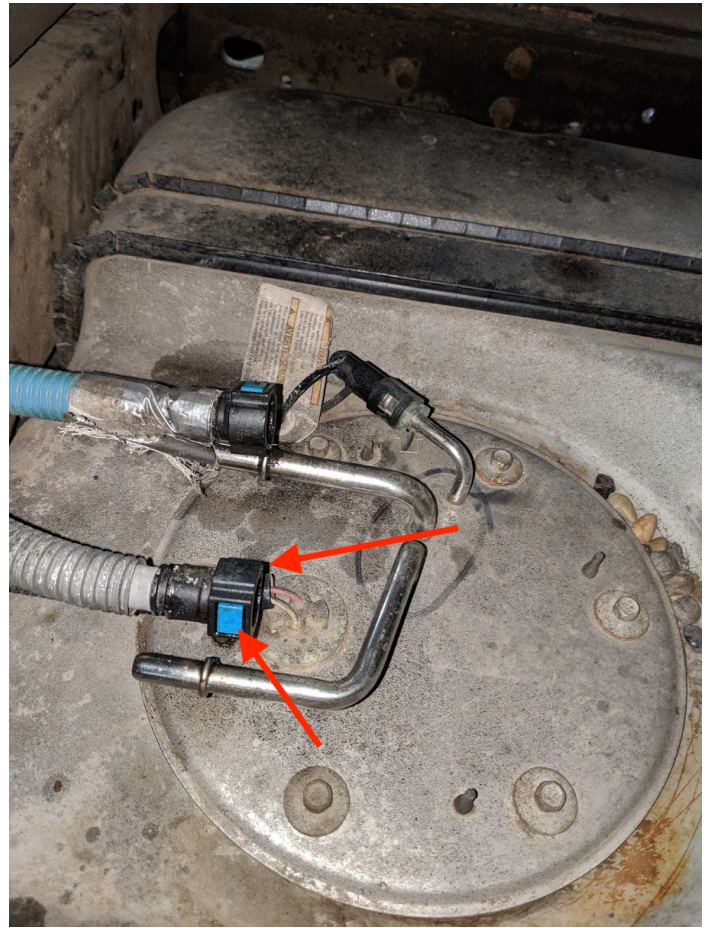
STEP 6

Remove the electrical connector on the sending unit. Use a screwdriver or pick to slide the red locking tab out, then depress the tab and the connector will release.



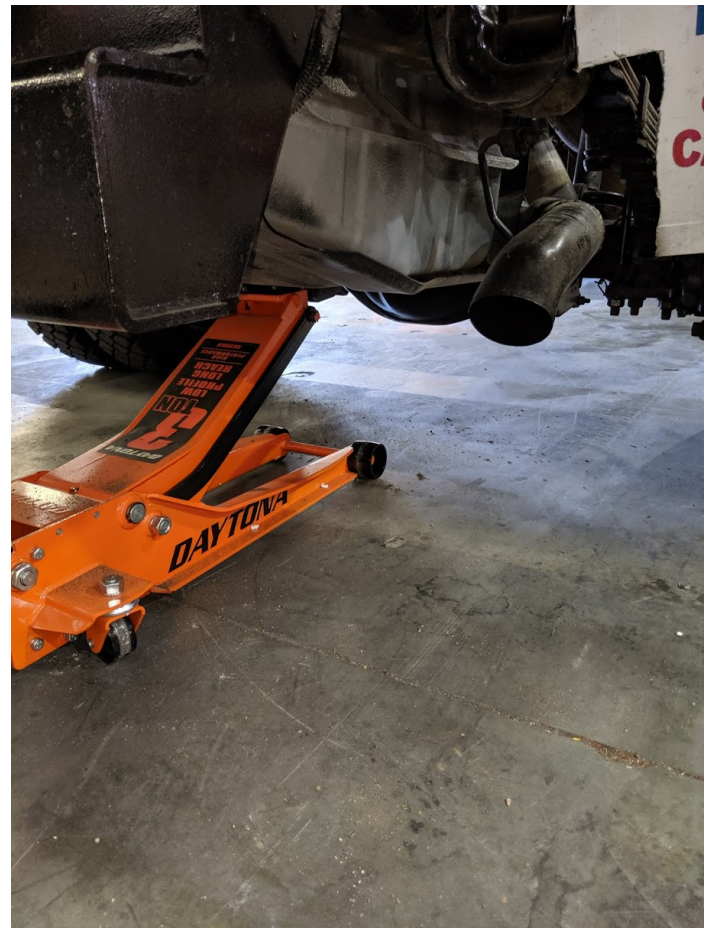
STEP 7

Remove both the feed and return lines from the sending unit. Squeeze the blue buttons on the fuel connector, gently press in towards the barb then pull off.



STEP 8

Now the tank is completely disconnected from the vehicle and can be lowered from the vehicle. Ensure the tank is still properly supported as remaining fuel can slosh and cause the tank to move.



STEP 9

Clean the area around the fuel sending unit to prevent debris from getting into the tank when removing the sending unit. Now use a 8mm socket to remove the OEM sending unit. This sending unit will be reused with the S&B Tank



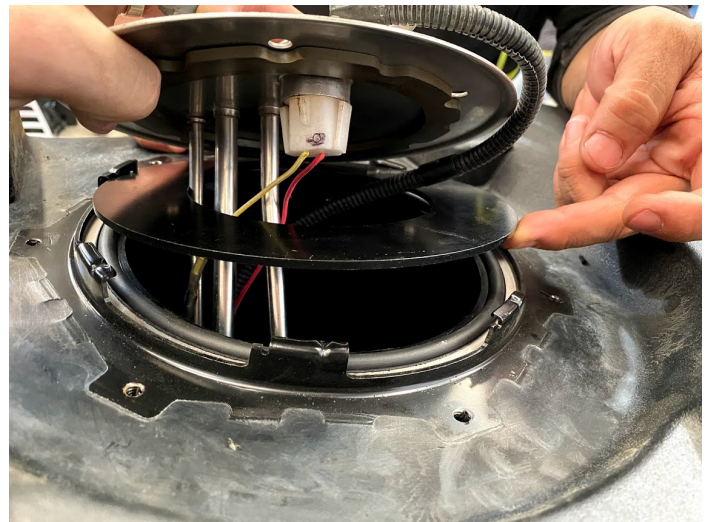
STEP 10

Place the S&B O ring into the groove on your S&B Tank.



STEP 11

IMPORTANT: If your OEM sending unit already has a gasket installed onto the sending unit flange, put the large S&B black washer onto the o’ring and then place the sending unit into the tank in the same orientation as the OEM tank. If your sending unit does not have a gasket then install our gasket (F) after the black washer(C).



STEP 12

Place the S&B locking ring over the sending unit and hit the ring clockwise until the rib on the OEM locking ring is fully seated past the indentation on the S&B receiving ring.



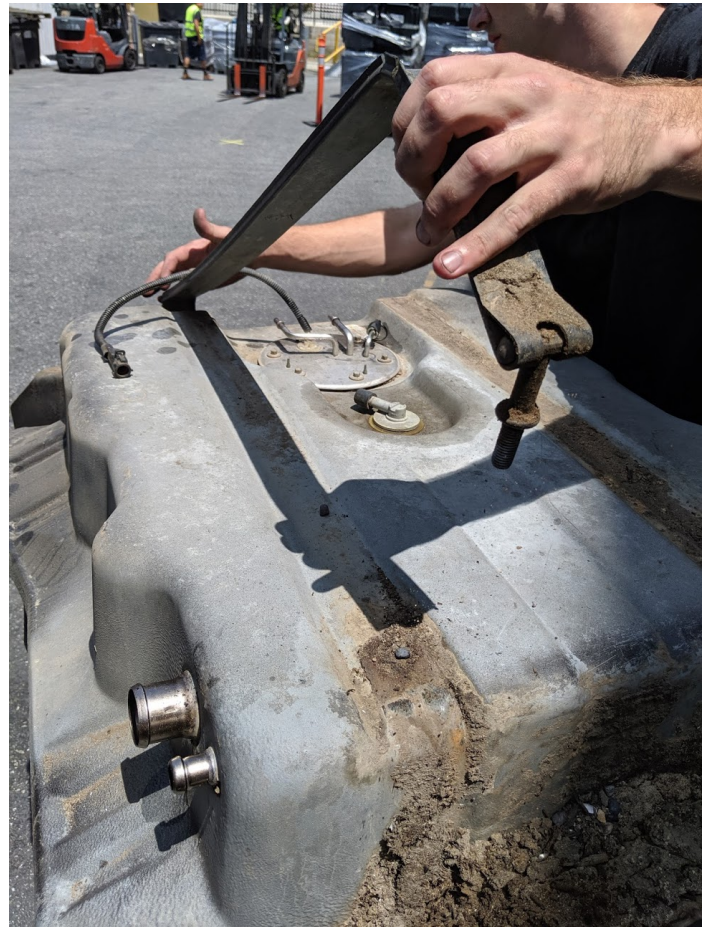
STEP 13

On the OEM fuel tank. Use a 19 metric socket to remove 2 strap bolts which hold the stock fuel tank into the skid plate.

STEP 14

Remove the OEM tank from the skid plate. You may have to pry to get the OEM tank to pop out of the skid plate.

Optional Tools



STEP 15

Place the S&B Tank in the OEM skid plate, reassemble the straps using a 19mm socket.

STEP 16

Position the S&B Tank on a jack and raise the tank until you are able to reconnect sending unit connections. Ensure the vent lines are positioned through the frame properly.

STEP 17

Reconnect the electrical connector on the sending unit. Slide the red locking tab back into the locked position.

STEP 18

Reconnect the electrical connector.

STEP 19

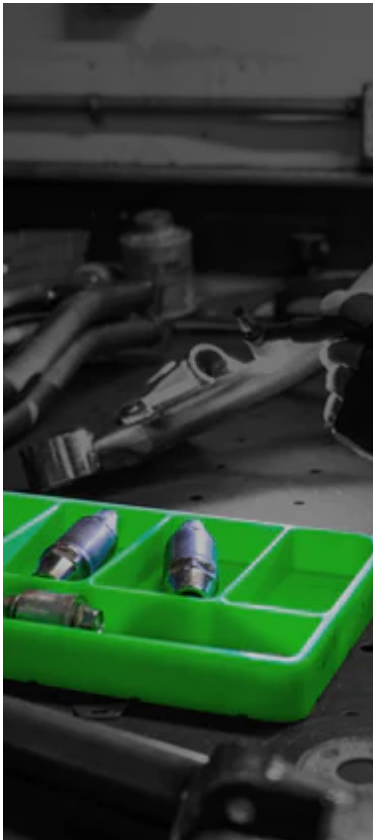
With a 15 metric socket, reinstall the 4 bolts that hold the fuel tank skid plate assembly to the truck frame. Hand torque the bolts to make sure all 4 bolts are tight.

STEP 20

Slide the vent hoses onto your S&B Tank and use a flathead screwdriver to tighten hose clamps.

STEP 21 INSTALLATION COMPLETE

If you have had any questions, please call or text us at (909)675-1313. If you installed your S&B Tank because of delamination issues, we recommend cleaning your fuel system and not re using any of the fuel from your previous tank. Thank you for purchasing an S&B Tank.



WIN A FREE TOOL TRAY

Sign-up below to receive the latest on product launches, insider tips and more. You'll also be entered into a tool tray giveaway where we choose a new winner every week.

Email Address

Sign Up

