

[SHOP BY VEHICLE](#)

0

INSTALL INSTRUCTIONS FOR 10-1003

[PRINT](#)

BEFORE YOU START

- Please read the entire product guide before proceeding
- Ensure all parts are present.
- If you are missing any parts, please call or text us at (909)-675-1313
- Do not work on your vehicle while the underbody components are hot.
- Make sure the vehicle is in park or the parking brake is set if you plan on working on the ground. If working on a lift, make sure the vehicle is lifted safely and securely.
- Drain your original fuel tank before beginning the S&B Installation process. S&B Tanks recommends removing only an empty or near empty tank for your safety. We recommend using a siphon or electronic transfer pump.

- Disconnect and isolate both of the negative battery cables

- Before installing S&B Tank, conduct pressure test to ensure o'ring is properly seated.

- In-bed Auxiliary Fuel Tanks will void the Lifetime Warranty.

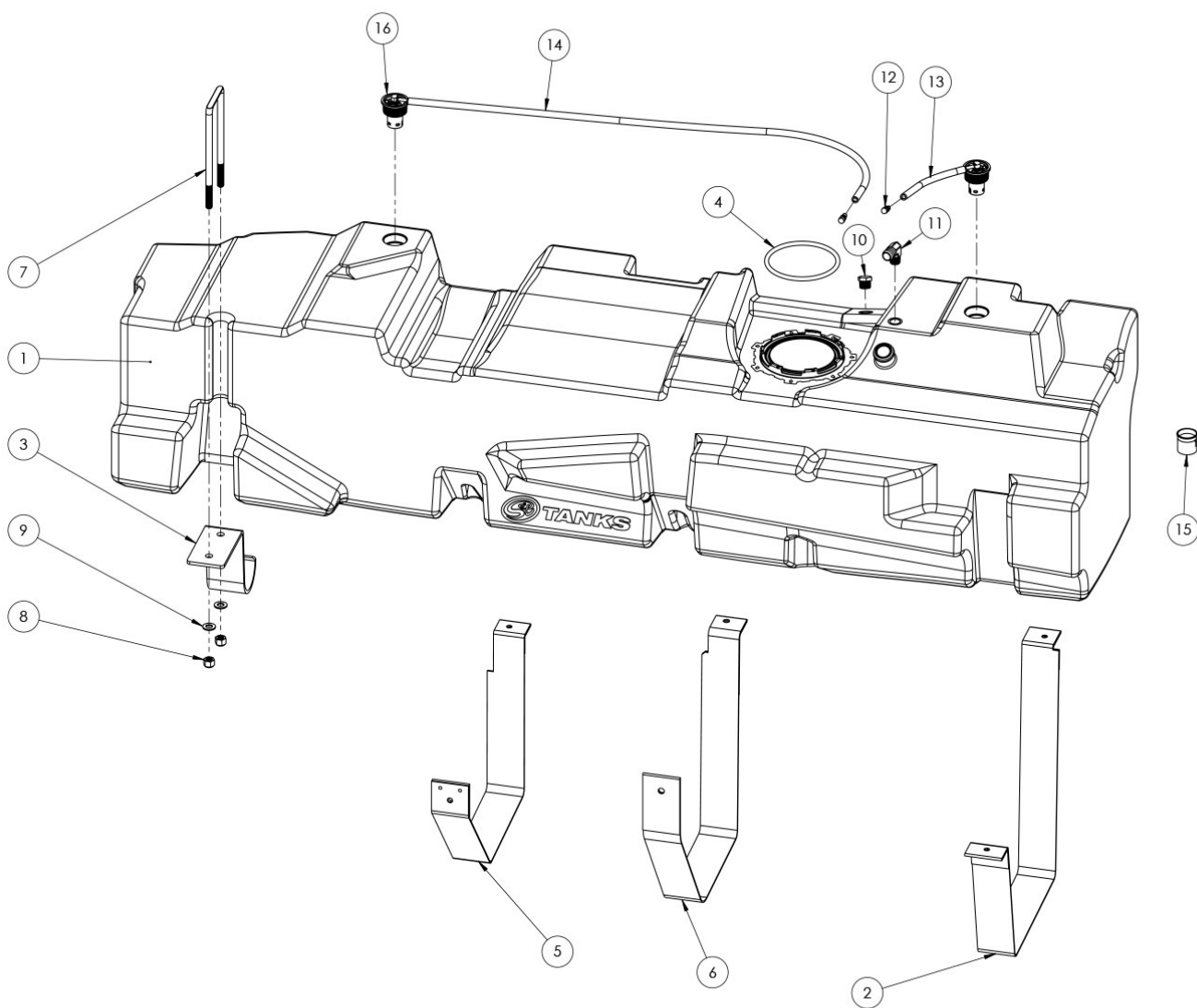
- Nozzle at high flow fuel station may continue to "click off". Tank is designed to work at regular fuel stations.

REQUIRED TOOLS

- Flathead Screwdriver
- Mallet/Hammer
- 13mm Socket
- 19mm Deep Socket
- Ratchet
- 12" Driver Extension

ENTER TO WIN





ITEM NO.	PART NUMBER	DESCRIPTION	QTY.
1	10-1003	HIGH CAPACITY REPLACEMENT TANK	1
2	TI1001-00	REAR STRAP	1
3	TI1002-00	FRONT BRACKET	1
4	TI1094C-00	O-RING, 8mm CS, NBR, 50 DURO	1
5	TI1095-00	FRONT STRAP FOR 10-1003	1
6	TI1097-00	MIDDLE STRAP FOR 10-1003	1
7	TI1111-00	FRONT U-BOLT	1
8	TI1123-00	NYLON-INSERT LOCK NUT	2
9	TI1124-00	WASHER	2
10	TI1125-00	1/2\"NPT PLUG	1
11	TI1129-00	90° BRASS ELBOW, 1/2\"NPT TO 3/4\" BARB	1
12	TI1141-00	VENT-BREATHER	2
13	TI1149-15	5/16\" FUEL HOSE, 15\" LONG	1
14	TI1149-50	5/16\" FUEL HOSE, 50\" LONG	1
15	TI1175-00	ICV, IN FILL PIPE	1
16	TI1226-00	OE STYLE ROLLOVER VENT VALVE	2

IMPORTANT NOTE

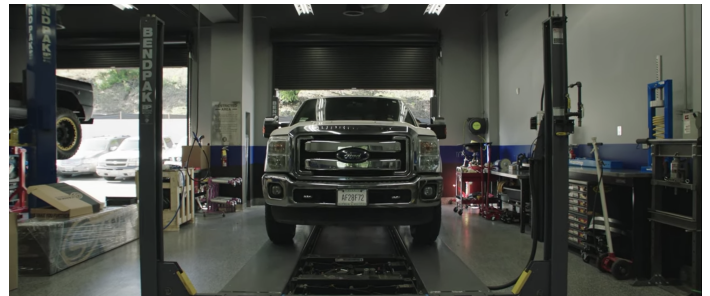
If your tank came out with a cutout in the baffle like this. You will be using the OEM fuel float



STEP 1

Raise the vehicle up on a lift to working height. The rear of the drivers side frame rail needs to be unobstructed as the S&B Tank will protrude under the frame rail.

- Installation can be completed without a lift. Make sure the vehicle is safely parked with the parking brake set. If your truck is lowered or has running boards you may have to use a jack to get the S&B Tank in position.



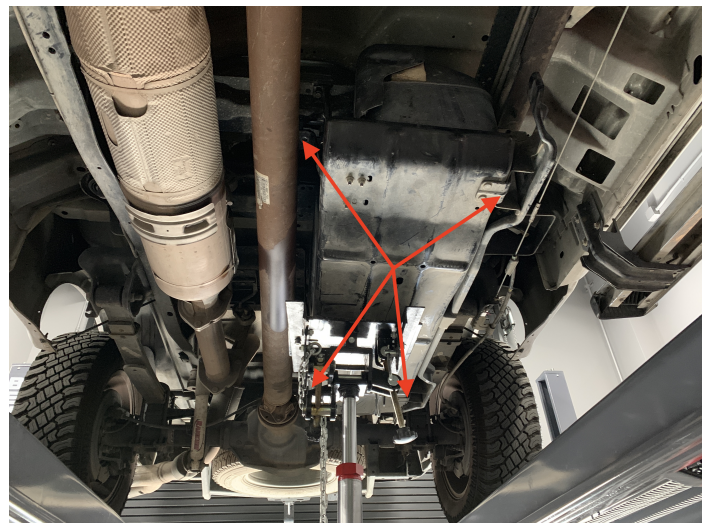
STEP 2

Disconnect the vent and fill hose from the filler/vent neck assembly.



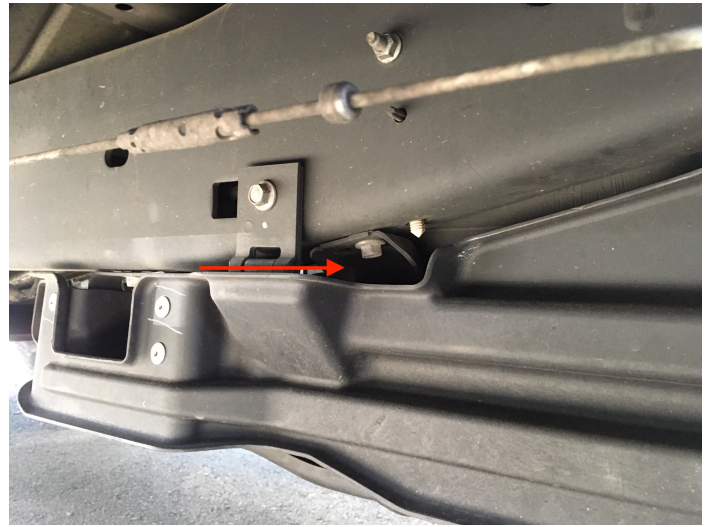
STEP 3

Remove the OEM skid plate if equipped. This will not be used again.



STEP 4

Remove the OEM bumper bracket. This will not be used again.



STEP 4B

Remove this additional bumper bracket found on some 2016 year trucks.



STEP 5

Center the hydraulic jack underneath the fuel tank and raise until the jack contacts the tank. Caution: Support the tank properly as remaining fuel can slosh and cause the tank to shift.

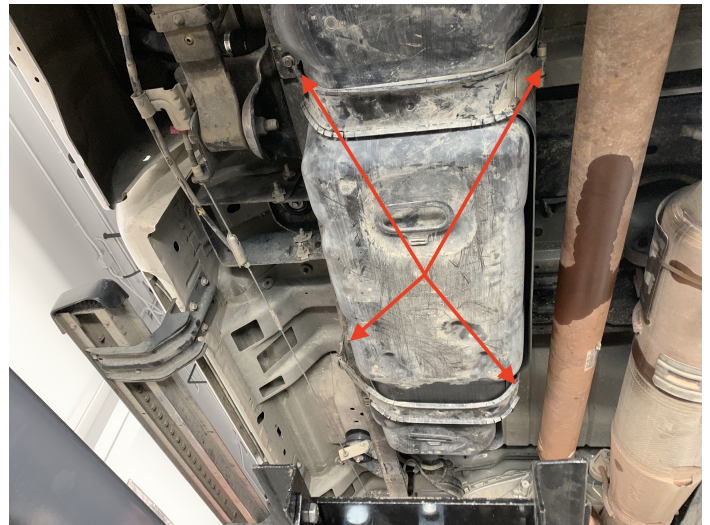
- Lift Install: Hydraulic Jack

- Floor Install: Floor jack with added support to properly hold tank



STEP 6

Remove the 4 bolts that secure the fuel tank straps.



STEP 7

Lower the tank approximately 6" or until you can reach the electrical connector, feed line, and return line on the fuel sending unit.



STEP 8

Disconnect the electrical connector. Slide out the red tab with a pick or flathead screwdriver. Depress the tab on the electrical connector and pull out.

STEP 9

Disconnect the fuel feed & return lines. The base of each connector has a lock. Pull the lock away from the center of the connector, depress the yellow or blue tab, press down and then pull up on the connector. Be patient with this step as these connectors are fragile and can break.



STEP 10

Be sure the fill and vent hoses are detached and lower the tank down and out of the from the vehicle.



STEP 11

Carefully check the inside of your S&B Tank to make sure there is no foreign debris.

STEP 12

Remove the OEM sending unit from the OEM tank. Position the flathead screwdriver in a tab of the locking room and hammer counter clockwise. Remove the locking ring, pull the sending unit out, and pour the fuel from the sending unit bowl into the OEM tank.



STEP 13

Place the included O-ring into the O-ring groove on the S&B Tank.



STEP 13B

IMPORTANT: Before installing the sending unit. Check to make sure the float did not get bent during shipping. The black float should be touching the ground when

the bucket is sitting on the ground. If the black float touches the ground before the yellow bucket, bend the end of float up (red arrow)

STEP 14

Replace the OEM fuel float with the included S&B Float. Place the S&B float into the fuel tank and hold the float off to the side so there's room for the sending unit bucket to pass through the hole. Once the float and bucket are inside the tank, connect the S&B Fuel float to the sending unit sensor

STEP 15

Put the OEM sending unit into the S&B Tank with the sending unit tab facing the arrow on the tank. With the OEM locking ring, lock down the OEM sending unit into the S&B Tank by hitting it clockwise.

STEP 15 B

Ensure the locking ring is fully rotated until the rib on the OEM locking ring is PAST the indentation on the S&B receiving ring.

STEP 16

Transfer the OEM vent and fill hose to the S&B Tank and install them in the same orientation as they were installed on the OEM tank. If your S&B Tank is equipped

with a long hose on the roll over vent, use the attached zip ties to attach the hose to the fill neck line. If not, don't worry about it.

STEP 16B

Before installing the filler hose onto the S&B Tank. Place the white check valve into the bottom of the filler hose with the blue arrow pointing into the tank.

STEP 16 PRESSURE TEST

This step is important to ensure your o'ring is seated properly.

- Block off openings with electrical tape

-Apply air pressure through the fill tube, spray soapy water around o'ring area and look/listen for leaks

<https://youtu.be/FqOYrRuplKU>

STEP 17

Prior to installing the S&B Tank, fish the U Bolt over the frame rail. Start with the u bolt in front of the body mount and positioned horizontally. Slide it backwards and rotate it 90 degrees downwards.

STEP 18

Center the S&B Tank on the jack and raise it until it is 6" from being in place.
Reconnect the fuel sending

unit electrical connector, blue return line fitting, and yellow feed line fitting. Make sure to push the locking tabs inwards on fuel line connectors.

STEP 18 PART B

Make sure the fuel line connectors are pushed all the way down. Sometimes the connector will click before it is fully seated. In this picture the blue connector is fully seated while the yellow is not. If your truck has a consistent long crank after installing your fuel tank, the yellow connector probably isn't fully seated.

STEP 19

Make sure the fill and vent hose are over the frame and raise the tank into place. The easiest way to do this is lifting the front portion of the tank first. Use the transfer case cross member to support the front lip of the tank.

STEP 20

Using the OEM fuel tank strap bolts, start installing the straps(30 lb-ft). The S&B straps line up with the OEM straps and utilize the same cage nuts.

STEP 21

After you have installed the straps, install the front support bracket into the indentation on the tank. Place

the washers over the threads and start the nylon lock nuts by hand. Tighten them evenly with a socket.

STEP 22

Reconnect the fuel fill and vent hoses. Slide hoses back onto metal tubes and tighten hose clamps.

STEP 23 INSTALLATION COMPLETE

Check to make sure the tank is not interfering with anything on the truck, all connectors are properly locked down, and bolts and nuts are properly tightened. Enjoy your S&B Tank. If you

have any questions call us
(909)-675-1313.



WIN A FREE TOOL TRAY

Sign-up below to receive the latest on product launches, insider tips and more. You'll also be entered into a tool tray giveaway where we choose a new winner every week.

Email Address

Sign Up

