



SHOP BY VEHICLE



0

INSTALL INSTRUCTIONS FOR 10-1011



PRINT

BEFORE YOU START

Please read the entire product guide before proceeding

Ensure all parts are present.

If you are missing any parts, please call or text us at (909)-675-1313

Do not work on your vehicle while the underbody components are hot.

Make sure the vehicle is in park or the parking brake is set if you plan on working on the ground. If working on a lift, make sure the vehicle is lifted safely and securely.

Drain your original fuel tank before beginning the S&B Installation process. S&B Tanks recommends removing only an empty or near empty tank for your safety. We recommend using a siphon or electronic transfer pump.

Disconnect and isolate both of the negative battery cables

Before installing S&B Tank, conduct pressure test to ensure o'ring is properly seated.

In-bed Auxiliary Fuel Tanks will void the Lifetime Warranty.

REQUIRED TOOLS

Flathead Screwdriver or 5/16" Nut Driver

Mallet/Hammer

13mm Socket

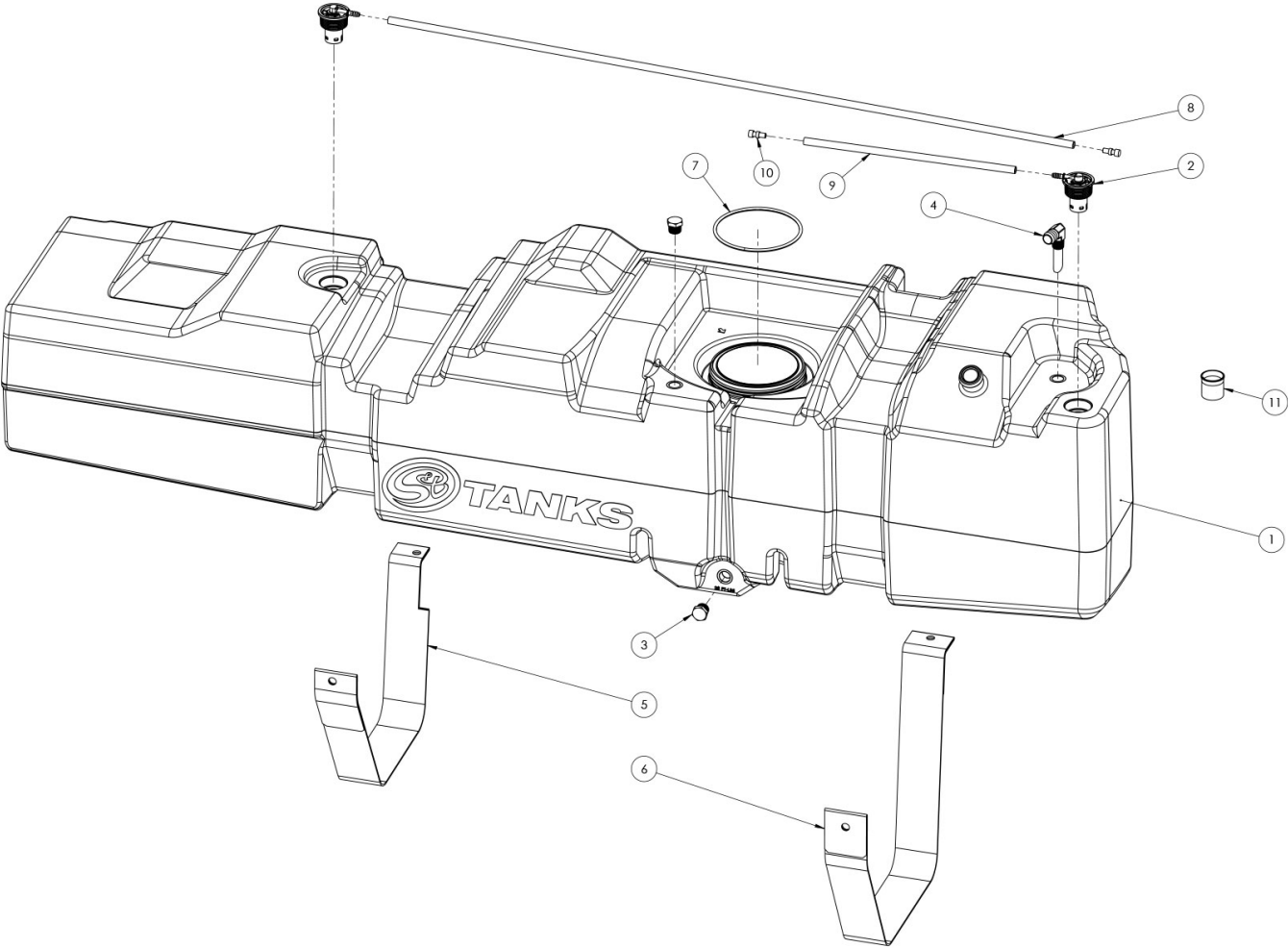
Ratchet

12" Driver Extension

ENTER TO WIN



Nozzle at high flow fuel station may continue to "click off". Tank is designed to work at regular fuel stations.



ITEM NO.	PART NUMBER	DESCRIPTION	QTY.
1	10-1011	HIGH CAPACITY REPLACEMENT TANK	1
2	TI1226-00	OE STYLE ROLLOVER VENT VALVE	2
3	TI1125-00	.5" PIPE PLUG	2
4	TI1288-00	BARBED VENT FITTING 90° ELBOW W/STRAW	1
5	TI1100-00	FRONT STRAP FOR 10-1011	1
6	TI1101-00	REAR STRAP FOR 10-1011	1
7	TI1258-00	SENDING UNIT GASKET FOR 10-1011	1
8	TI1149-50	FUEL HOSE, 5/16" x 50", BK	1
9	TI1149-15	FUEL HOSE, 5/16", BK	1
10	TI1141-00	ROLLOVER VENT CAP	2
11	TI1175-00	ICV, IN FILL PIPE	1

IMPORTANT NOTE

If your truck has this V shaped crossmember connected to the carrier bearing crossmember, the S&B Tank will not fit with this in place.



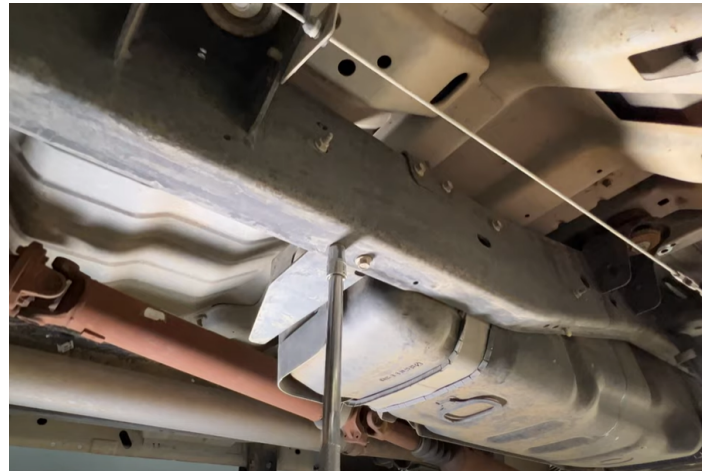
STEP 1

Loosen and the hose clamp for the filler and vent hoses. Once loosened, separate the rubber hose from the metal filler.



STEP 1B

If your truck has this plate in front of the OEM tank, remove it with a 15mm socket.



STEP 2

Remove the bolts holding the skid plate to the frame. Remove the skid plate. The skid plate will not be reused.



STEP 3

Support the bottom of the tank with a jack and remove the front strap. The bolt holding the front strap is on the outside of the frame.



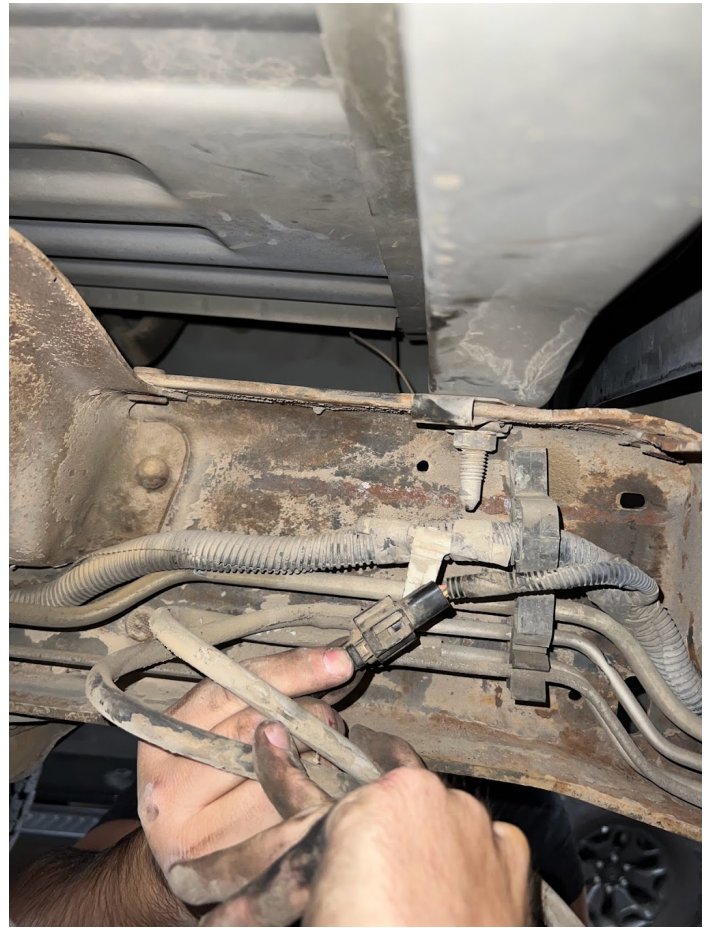
STEP 4

Remove the rear strap. The frame side bolt for the rear strap is right above the leaf string perch



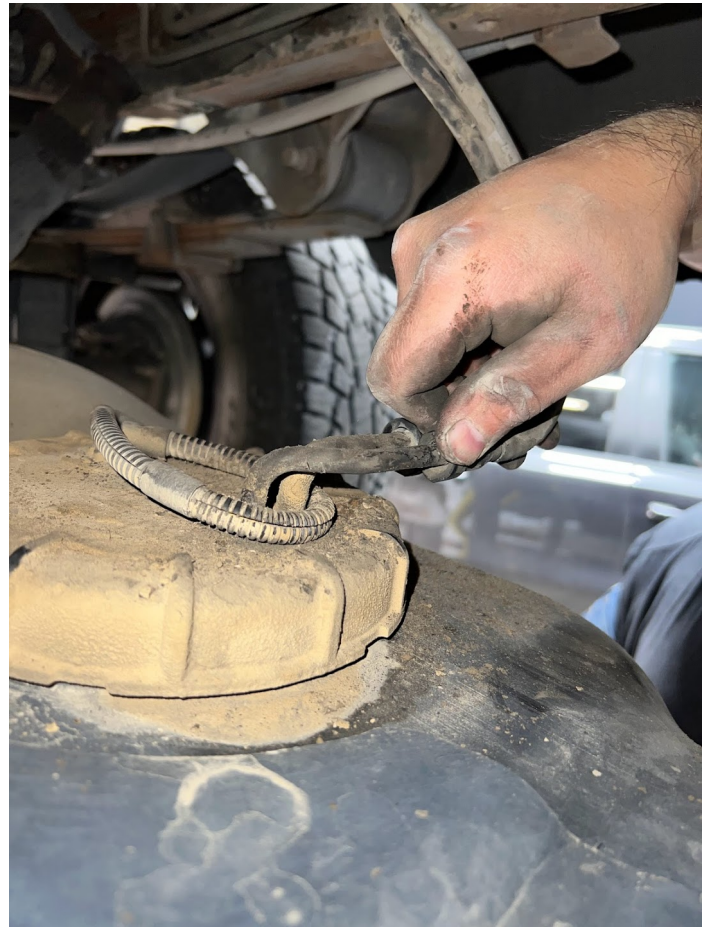
STEP 5

Drop the fuel tank down about 6" to give yourself access to the electrical connector, fuel lines and rollover valve lines. Be careful to not break the fuel lines when lowering the tank. Press the button on the electrical connector and disconnect.



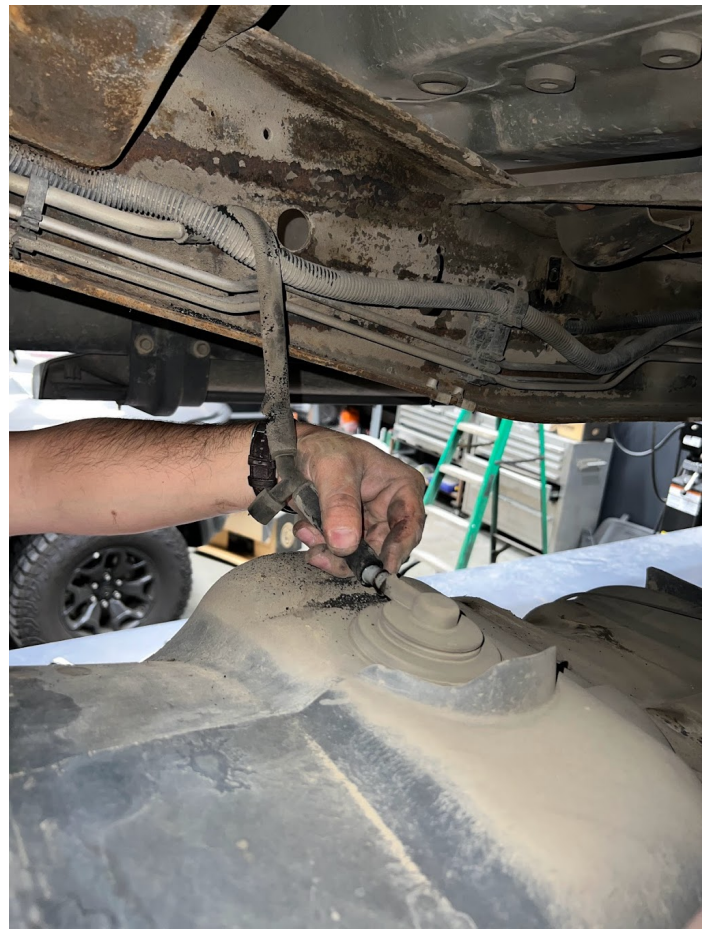
STEP 6

Press the buttons on the fuel lines and pull to remove both the feed and return lines.



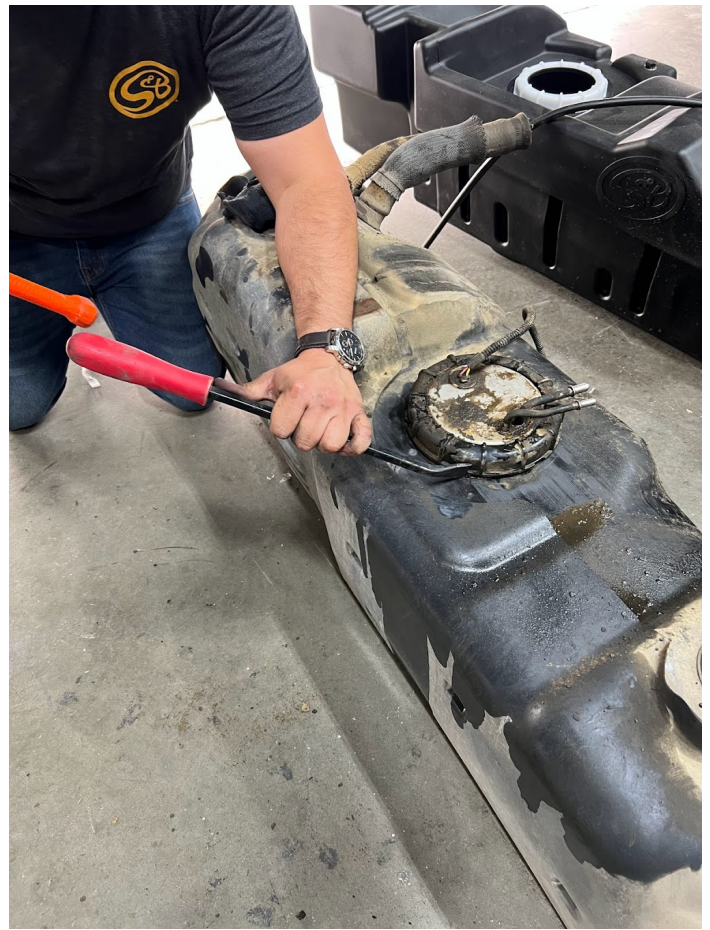
STEP 7

Remove the rubber rollover hose attached to the front and rear of the original tank.



STEP 8

Use a dead blow and pry bar or large flat head screw driver to hit the locking ring counter clockwise. We will reuse this ring on the S&B Tank.



STEP 9

Place the included S&B o-ring into the groove on the S&B Tank.



STEP 10

Before installing the sending unit, bend the 2 tabs on the underside of the sending unit away from the sealing surface.

STEP 11

Place the sending unit into the S&B Tank with the larger fuel nipple perpendicular to the fuel tank. Reuse the OEM locking ring and tighten.

PRESSURE TEST

This step is important to ensure your o'ring is seated properly.

- Block off openings with electrical tape or with fingers
- Apply air pressure through the fill tube, spray soapy water around o'ring area and look/listen for leaks
- If there are leaks, call/text 909.675.1313

STEP 12

Remove the filler and vent hose from the OEM tank and transfer to the S&B Tank. Before putting the filler on the S&B Tank, put the included check valve into the end of the hose that will be connected to the tank. The flow arrow should be pointing into the fuel tank.

STEP 14

Transfer the slip nut from the front OEM strap onto the S&B front strap. The front strap is the shorter of the 2 S&B straps.

STEP 15

The S&B Tank is ready to be installed. When installing the tank, put the front 5/16" vent line over the frame rail and make sure the rear fill and vent lines don't get caught in between the tank and frame.

STEP 16

Reconnect the electrical, feed and return line on the top of the tank.

STEP 17

Install the front and rear S&B straps.

STEP 18

Reinstall the filler and vent lines. Route the front 5/16" vent line along the top of the frame rail and zip tie to the filler.

STEP 19 FINAL CHECKLIST

This final checklist is very important.

#1 Make sure all bolts and nuts are safely fastened and torqued.

#2 Ensure there is proper driveshaft clearance.

#3 Double check fuel line connections, the electrical connection as well as the vent and fill lines.

#4 Lastly, fill the tank full and check for any leaks.

If you have any questions, call or text us at [909.675.1313](tel:909.675.1313)



WIN A FREE TOOL TRAY

Sign-up below to receive the latest on product launches, insider tips and more. You'll also be entered into a tool tray giveaway where we choose a new winner every week.

Email Address

Sign Up

