



# INSTALL INSTRUCTIONS FOR 10-1028

[PRINT](#)

## BEFORE YOU START

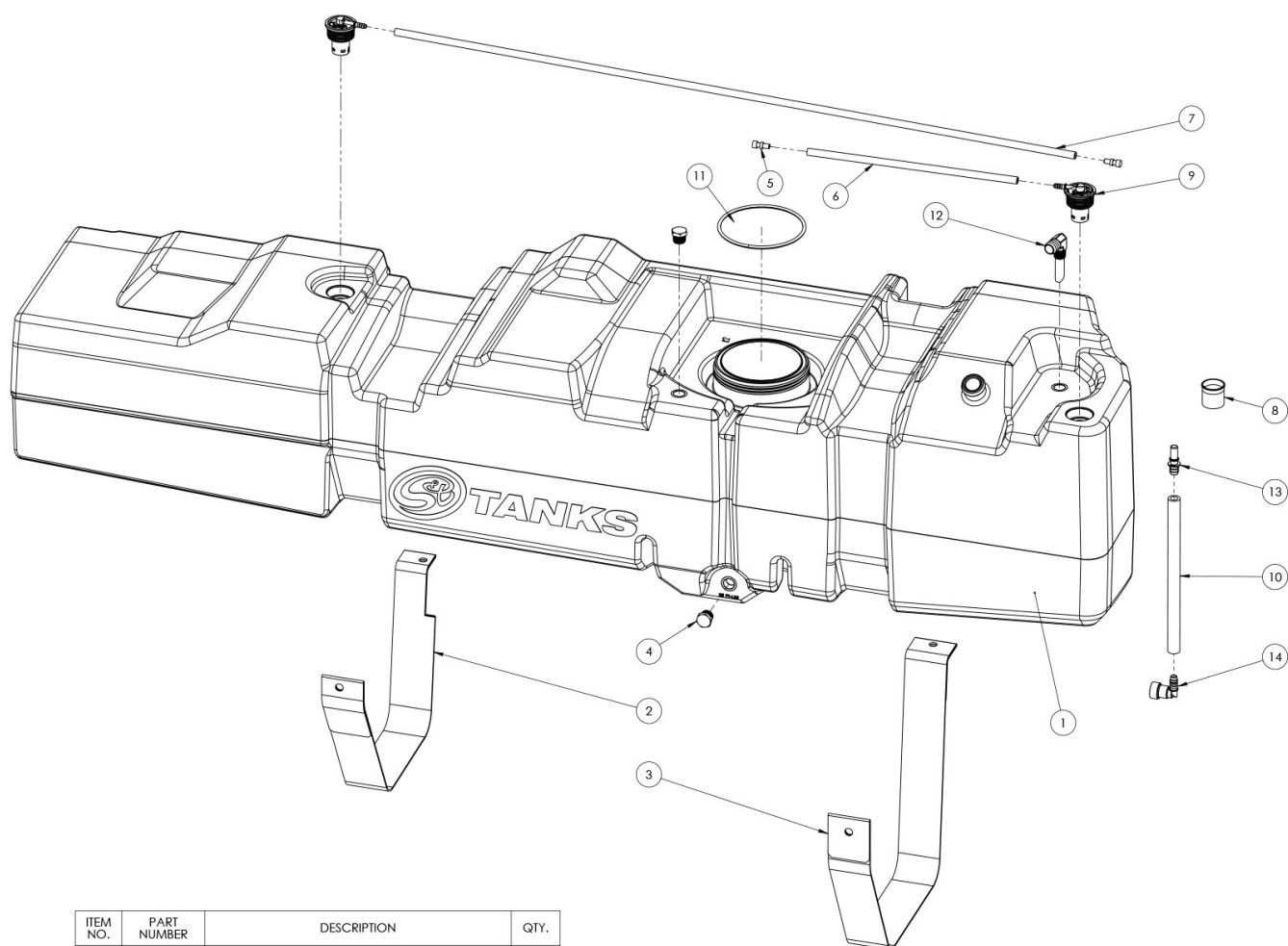
- Please read the entire product guide before proceeding
- Ensure all parts are present.
- If you are missing any parts, please call or text us at (909)-675-1313
- Do not work on your vehicle while the underbody components are hot.
- Make sure the vehicle is in park or the parking brake is set if you plan on working on the ground. If working on a lift, make sure the vehicle is lifted safely and securely.
- Drain your original fuel tank before beginning the S&B Installation process. S&B Tanks recommends removing only an empty or near empty tank for your safety. We recommend using a siphon or electronic transfer pump.
- Disconnect and isolate both of the negative battery cables
- Before installing S&B Tank, conduct pressure test to ensure o'ring is properly seated.
- In-bed Auxiliary Fuel Tanks will void the Lifetime Warranty.
- Nozzle at high flow fuel station may continue to "click off". Tank is designed to work at regular fuel stations.

## REQUIRED TOOLS

- Flathead Screwdriver or 5/16" Nut Driver
- Mallet/Hammer
- 13mm Socket
- Ratchet
- 12" Driver Extension

ENTER TO WIN





ITEM NO.	PART NUMBER	DESCRIPTION	QTY.
1	10-1028	HIGH CAPACITY REPLACEMENT TANK	1
2	TI1100-00	FRONT STRAP FOR 10-1011	1
3	TI1101-00	REAR STRAP FOR 10-1011	1
4	TI1125-00	.5" PIPE PLUG	2
5	TI1141-00	ROLLOVER VENT CAP	2
6	TI1149-15	FUEL HOSE, 5/16", BK	1
7	TI1149-50	FUEL HOSE, 5/16" x 50", BK	1
8	TI1175-00	ICV, IN FILL PIPE	1
9	TI1226-00	OE STYLE ROLLOVER VENT VALVE	2
10	TI1238-12	FUEL HOSE, 1/2" x 12", BK	1
11	TI1258-00	SENDING UNIT GASKET FOR 10-1011	1
12	TI1288-00	BARBED VENT FITTING 90° ELBOW W/STRAW	1
13	TI1325-00	1/2" BARB TO 1/2" QUICK CONNECTOR	1
14	TI1326-00	1/2" BARB TO 1/2" QUICK CONNECTOR, 90° ELBOW	1

## STEP 1

Loosen and the hose clamp for the filler and vent hoses. Once loosened, separate the rubber hose from the metal filler.



## STEP 2

Remove the bolts holding the skid plate to the frame.

Remove the skid plate. The skid plate will not be reused.



### **STEP 3**

Support the bottom of the tank with a jack and remove the front strap. The bolt holding the front strap is on the outside of the frame.





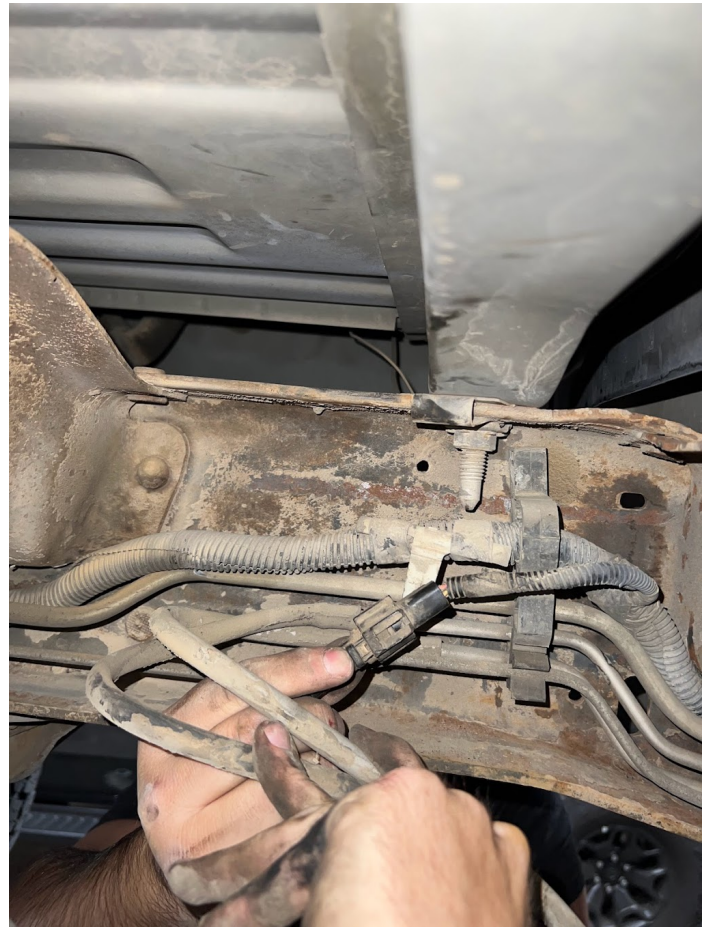
## STEP 4

Remove the rear strap. The frame side bolt for the rear strap is right above the leaf string perch



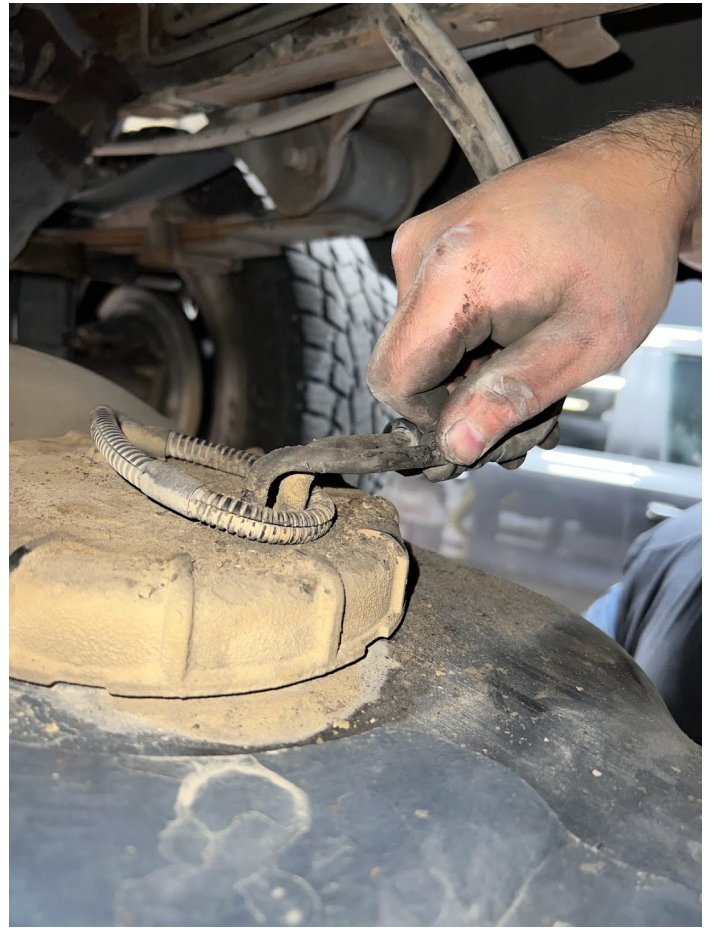
## STEP 5

Drop the fuel tank down about 6" to give yourself access to the electrical connector, fuel lines and rollover valve lines. Be careful to not break the fuel lines when lowering the tank. Press the button on the electrical connector and disconnect.



## STEP 6

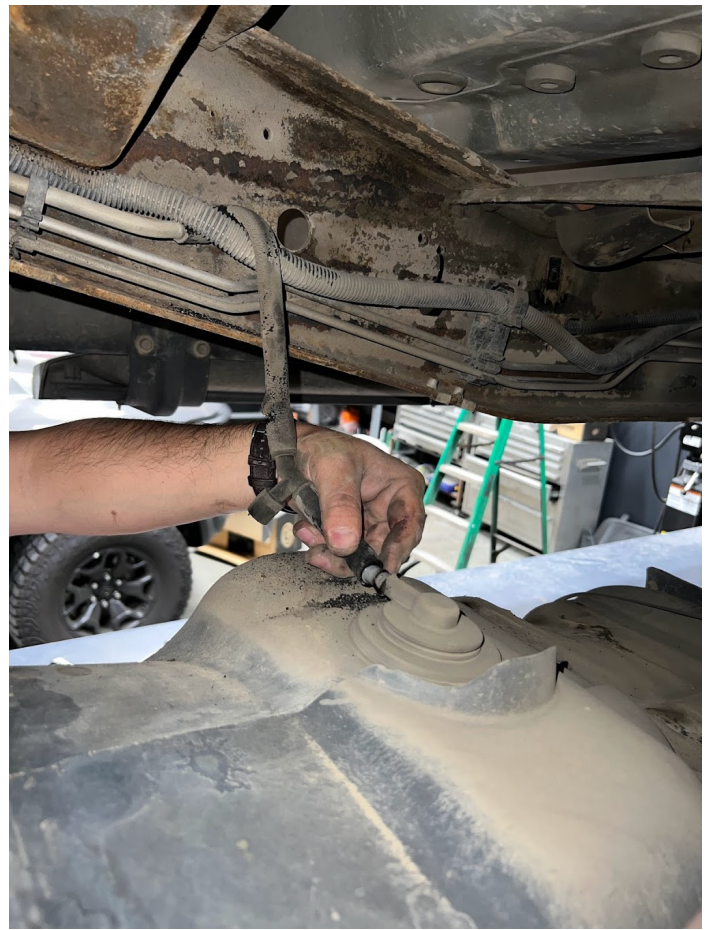
Press the buttons on the fuel lines and pull to remove both the feed and return lines.





## STEP 7

Remove the rubber rollover hose attached to the front and rear of the original tank.



## STEP 8

Use a dead blow and pry bar or large flat head screw driver to hit the locking ring counter clockwise. We will reuse this ring on the S&B Tank.



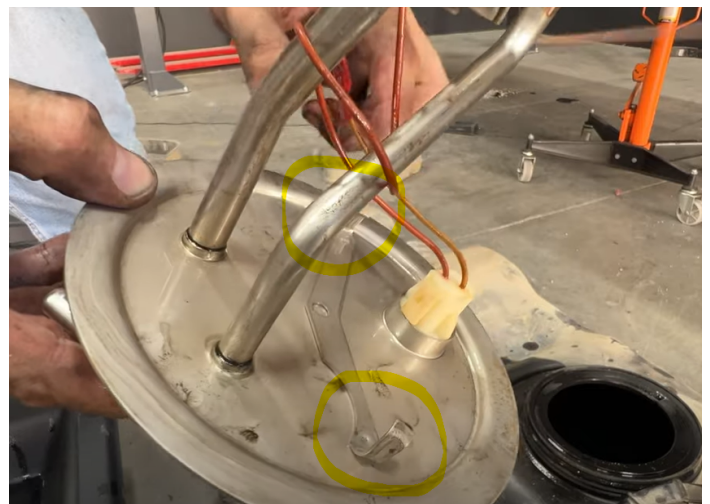
## STEP 9

Place the included S&B o-ring into the groove on the S&B Tank.



## STEP 10

Before installing the sending unit, bend the 2 tabs on the underside of the sending unit away from the sealing surface.





## STEP 11

Place the sending unit into the S&B Tank with the larger fuel nipple perpendicular to the fuel tank. Reuse the OEM locking ring and tighten.



## PRESSURE TEST

This step is important to ensure your o'ring is seated properly.

Block off openings with electrical tape or with fingers

Apply air pressure through the fill tube, spray soapy water around o'ring area and look/listen for leaks

If there are leaks, call/text  
909.675.1313



## STEP 12

Remove the filler and vent hose from the OEM tank and transfer to the S&B Tank. Before putting the filler on the S&B Tank, put the included check valve into the end of the hose that will be connected to the tank. The flow arrow should be pointing into the fuel tank.

---

## STEP 13

Zip tie the rear 5/16" hose to the main vent.

## STEP 14



Transfer the slip nut from the front OEM strap onto the S&B front strap. The front strap is the shorter of the 2 S&B straps.

## **STEP 15**

The S&B Tank is ready to be installed. When installing the tank, put the front 5/16" vent line over the frame rail and make sure the rear fill and vent lines don't get caught in between the tank and frame.

## **STEP 16**

Reconnect the electrical, feed and return line on the top of the tank.

## **STEP 17**

Install the front and rear S&B straps.

## **STEP 18**

Reinstall the filler and vent lines. Route the front 5/16" vent line along the top of the frame rail and zip tie to the filler.

## **STEP19 FINAL CHECKLIST**

This final checklist is very important.

#1 Make sure all bolts and nuts are safely fastened and torqued.

#2 Ensure there is proper driveshaft clearance.

#3 Double check fuel line connections, the electrical connection as well as the vent and fill lines.

#4 Lastly, fill the tank full and check for any leaks.

If you have any questions, call  
or text us at 909.675.1313



## WIN A FREE TOOL TRAY

---

Sign-up below to receive the latest on product launches, insider tips and more. You'll also be entered into a tool tray giveaway where we choose a new winner every week.

Email Address

Sign Up

