



SHOP BY VEHICLE



0

# INSTALL INSTRUCTIONS FOR 75-6000



PRINT

## BEFORE YOU START

Please read the entire product guide before proceeding.

Ensure all parts are present.

If you are missing any of the components, call our customer support at (909) 947-0015.

Do not work on your vehicle while the engine is hot.

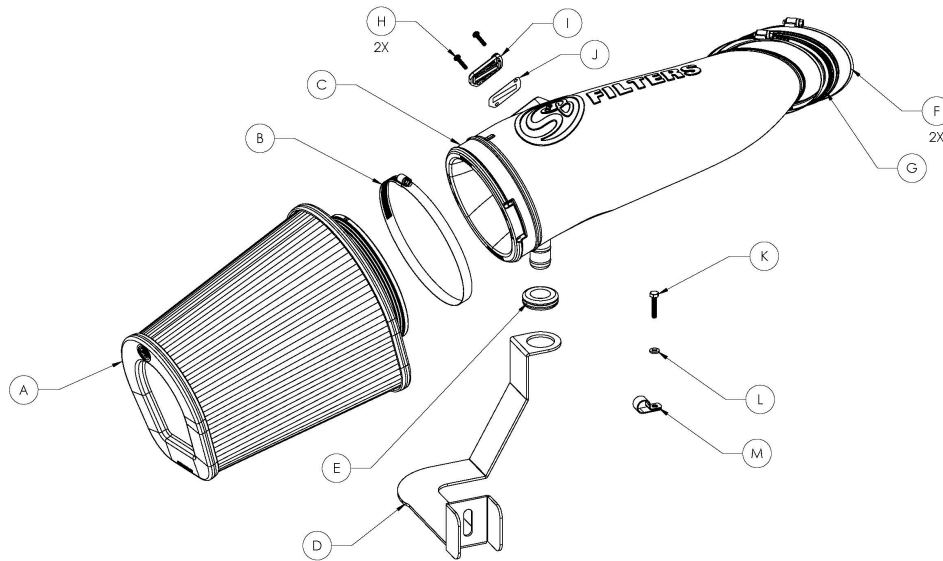
Make sure the engine is turned off and the vehicle is in Park or the Parking Brake is set.

## REQUIRED TOOLS

- Socket Wrench
- 8mm, 1/2" Socket
- 5/16" Nut Driver or Flat Blade Screwdriver
- Panel Popper
- T20 Torx
- Phillips Screwdriver
- Scissors

ENTER TO WIN





ITEM NO.	PART NUMBER	DESCRIPTION	QTY.	ITEM NO.	PART NUMBER	DESCRIPTION	QTY.
A	KF-1070	Air Filter	1	H	AI1837-00	8-32 Thread Size, 3/4" Long Screw	2
B	AG1012-00	Hose Clamp, #104	1	I	AI1822-00	MAF Adapter Pad	1
C	AL1344-00	Intake Tube	1	J	AI1823-00	MAF Gasket	1
D	AI2173-00	Intake Tube Support Bracket	1	K	AI1257-00	HHCS, M6 x 10mm	1
E	AI1368-00	Rubber Grommet	1	L	AI1416-00	M6 Washer	1
F	AG1009-00	Hose Clamp, #72	2	M	AI1511-00	Loop Clamp, 5/8" OD x 1/2" Wide	1
G	AI1523C-00	Straight Coupler	1				

## STEP 1

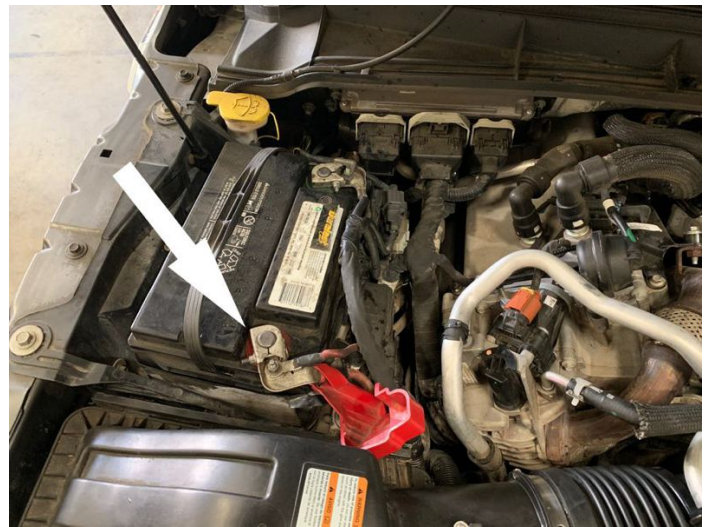
With the ignition switched off and the parking brake set. Disconnect the negative battery cables on both batteries and the positive battery cable on the passenger side battery.

**IMPORTANT:** Failure to disconnect the battery for a minimum of 2 hours may cause the Check Engine Light to illuminate upon completion

of the installation or subsequent operation.

**DO NOT SKIP THIS STEP!**

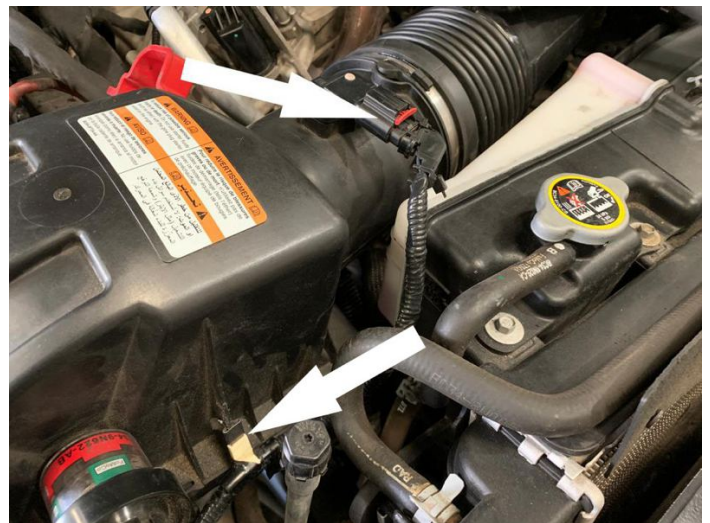
Tools Required: Socket Wrench, 8mm Socket.



## STEP 2

Disengage the red locking clip, press down on the tab, then pull out to disconnect the MAF sensor harness from the MAF sensor. Unclip the wiring harness from the stock intake lid.

Tools Required: Panel Popper

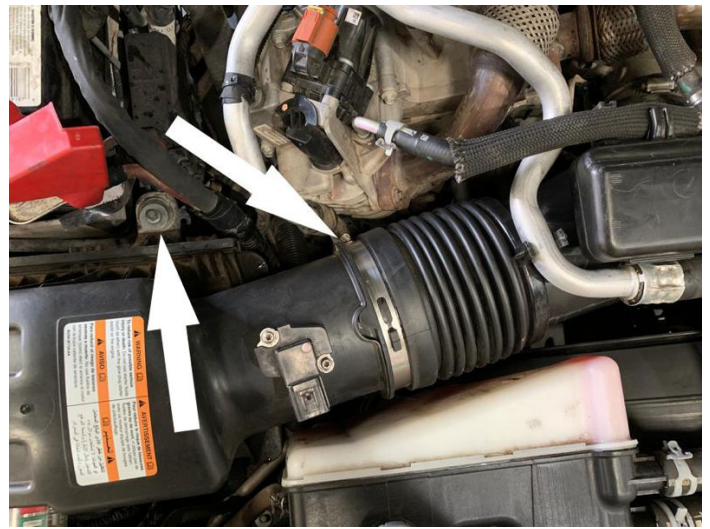


## STEP 3

Loosen the hose clamp at the intake tube and remove the

screw securing the air box to the battery tray.

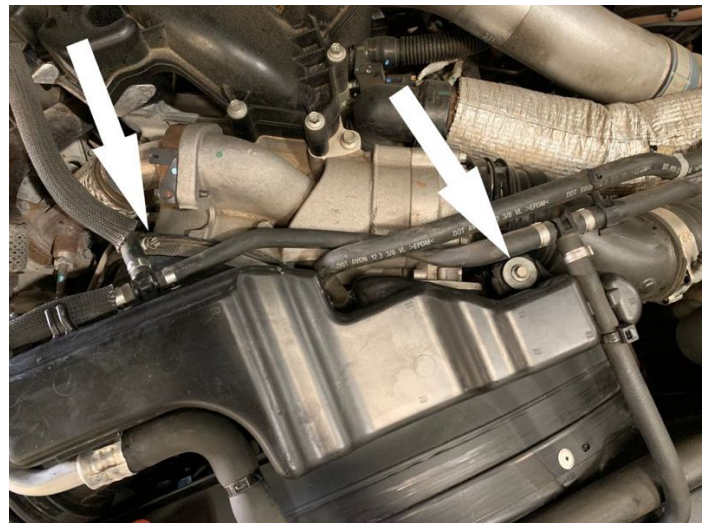
Tools Required: Socket Wrench, 8mm Socket



## STEP 4

Loosen the hose clamp at the turbo inlet and remove the screw securing the stock intake tube.

Tools Required: Socket Wrench, 8mm Socket



## STEP 5

Disconnect all the rubber hoses and coolant lines from the intake tube.





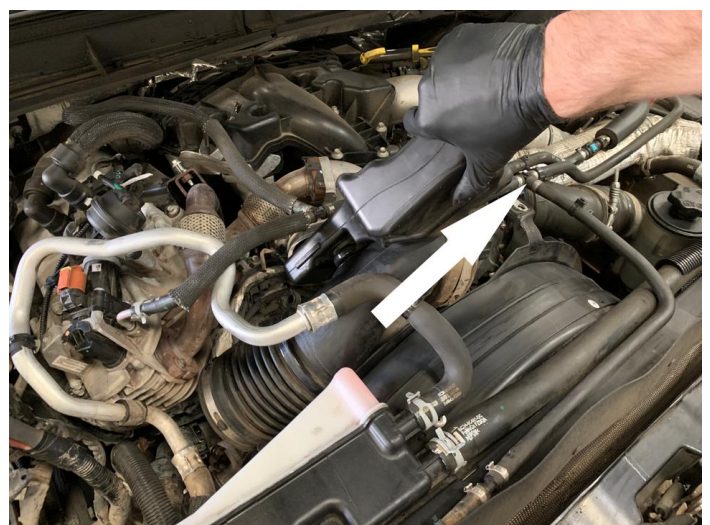
## STEP 6

Lift the stock air box up to unseat the grommets from the air box tray and remove the stock air box from the vehicle.



## STEP 7

Remove the stock intake tube from the vehicle by removing the coupler from the turbo inlet, twisting it into the position shown, and pulling it out from underneath the metal coolant line.



## STEP 8

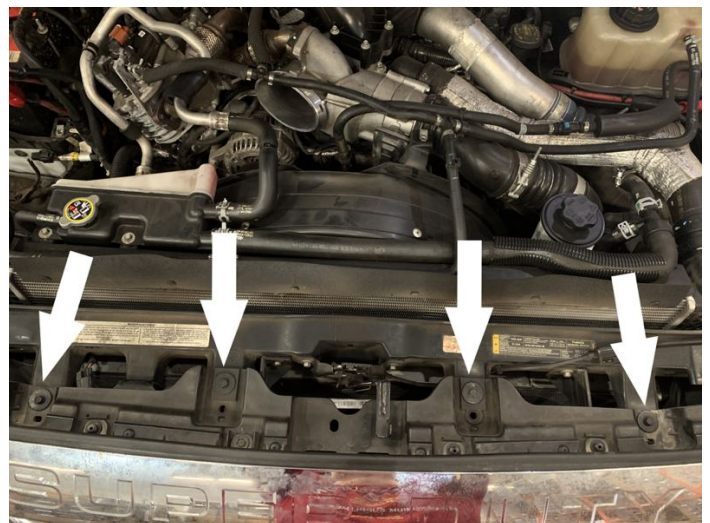
Remove the two screws securing the bracket under the airbox which holds the grommets to seat the airbox. Then remove the bracket from the vehicle. We will reuse one of the removed screws in step 10.

Tools Required: Socket Wrench, ½" Socket

## STEP 9

Looking at the top of the engine bay, remove the indicated 4 screws securing the grill to the vehicle.

Tools Required: Socket Wrench, 10mm Socket



## STEP 10

Pull the grill slightly forward and unclip the tabs securing the bottom of the grill to the vehicle. Then pull off the grill.

Tools Required: Flat head  
Screwdriver



## STEP 11

Remove the four screws securing the passenger side headlight assembly to the vehicle and firmly pull the light straight out, unclipping it from the frame of the truck.

Note: The screw securing the bottom of the headlight can be found between the headlight housing and the



bumper. A socket extension is required to reach the screw.

Tools Required: Socket Wrench, 10mm Socket



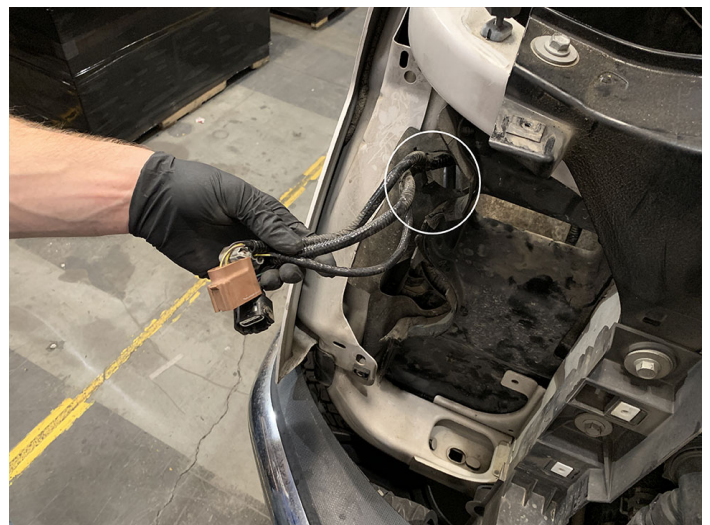
## STEP 12

Unplug the three headlight bulbs from the headlight housing.



## STEP 13

Feed the headlight bulbs through the hole in the engine bay liner so that they are seated inside the engine bay.





## **STEP 14**

Disconnect the plastic air intake scoop from the frame of the vehicle by removing the series of plastic connectors found around the perimeter of the headlight opening.

Tools Required: Panel Popper

## **STEP 15**

Unclip the headlight harness from the plastic intake scoop and pull the intake scoop up and out of the vehicle.

Removing this piece from the vehicle provides space for the large filter included with the open intake kit.

## **STEP 16**

Install the provided grommet (E) into the hole on the intake tube support bracket (D) and attach it to the frame of the vehicle in the position shown. Using one of the screws that was removed in step 7, loosely tighten the bracket down so that there remains some play.

Tools Required: Ratchet, ½”  
Socket

## **STEP 17**

Gently push the AC line so that it sits under the tube support bracket as shown.

## **STEP 18**

After attaching the provided coupler (G) to the intake tube (C) with a #74 hose clamp (F), install the intake tube into the vehicle by slipping the other end of the coupler around the turbo inlet. Gently guide the prong on the bottom of the tube into the grommet on the tube support bracket. Check the fitment of the bracket and tube and then tighten the bracket fully. This step ensures that the tube support bracket is installed in a position that will seat the tube correctly. After tightening down the bracket, remove the intake tube from the vehicle.

Tools Required: Ratchet, ½” Socket

## **STEP 19**

Assemble the intake tube/filter assembly outside of the vehicle. Do this by attaching the coupler to the oval end of the tube and securing it using a provided #74 hose clamp. Then attach the filter (A) to the intake tube and secure it using a



provided #104 hose clamp (B). Put the remaining #74 hose clamp loosely around the remaining side of the coupler. Make sure the location markings on the filter and tube line up to ensure proper alignment of the filter assembly.

Tools Required: 5/16" Nut Driver

## **STEP 20**

Remove the MAF sensor from the stock intake housing.

Tools Required: T20 Torx

## **STEP 21**

Install the MAF sensor, MAF sensor pad (I) and MAF sensor pad gasket (J) onto

the intake tube, securing them to the tube with the provided phillips head screws (H).

Tools Required: Phillips  
Screwdriver

## **STEP 22**

Install the assembled intake kit into the truck by sliding the intake tube under the aluminum coolant hose so that the tube's coupler slips around the turbo inlet. Secure the assembly by pushing the tube down so that the prong on the bottom side of the tube presses securely in the grommet of the bracket installed in step 18.

## **STEP 23**

Finish securing the kit to the vehicle by tightening the #74

hose clamp over the coupler  
and around the turbo inlet.

Tools Required: 5/16" Nut  
Driver

## **STEP 24**

Visually inspect the  
installation of the intake kit.  
Make sure the tube is fully  
seated within the support  
tube and that the tube did  
not push out the grommet  
during installation. The  
picture provided shows a  
good place to inspect the  
tube's installation.

## **STEP 25**

After verifying that the kit has  
been installed correctly,  
reconnect the headlight bulbs



to the headlight assembly  
that was removed in step 11.

## **STEP 26**

Reinstall the headlight assembly into the vehicle by pressing the assembly into the frame in order to seat the metal clip. Then replace all four screws that were removed in step 11.

Tools Required: Socket  
Wrench, 10mm Socket

## **STEP 27**

Reinstall the grill onto the vehicle by aligning the clips

on the bottom of the grill  
with their receptacles and  
pushing the grill firmly toward  
the engine bay.

## **STEP 28**

Finish reinstallation of the  
grill by replacing the four  
screws removed in step 9.

Tools Required: Socket  
Wrench, 10mm Socket

## **STEP 29**

Reroute the MAF sensor  
harness so that it is  
positioned between the filter  
and the battery tray. Attach  
the provided MAF harness  
extension (K) to the existing

MAF sensor connector by inserting the male end and engaging the red locking clip.

## **STEP 30**

Attach the remaining end of the MAF harness extension to the MAF sensor by inserting the female end and engaging the red locking clip.

## **STEP 31**

Affix the extended MAF cable to the adjacent battery harness with a zip tie (M) to take away some of the slack that exists in the MAF cable. Route the remaining cable under the filter and out of sight.



Tools Required: Scissors

## **STEP 32**

Wrap the metal coolant line that sits on top of the tube with the provided foam wrap (L) to protect your intake tube from being scratched or rubbed by the metal coolant line.

## **STEP 33**

Reconnect the passenger side battery's positive terminal and both battery's negative terminals. Inspect your installation, make sure the kit is properly positioned and all fasteners are secured. S&B

Filter recommends keeping all stock parts in case you would ever need to reinstall the stock intake. Affix the ID label near the intake kit. The installation is now complete.

Tools Required: Socket  
Wrench, 8mm Socket



## WIN A FREE TOOL TRAY

---

Sign-up below to receive the latest on product launches, insider tips and more. You'll also be entered into a tool tray giveaway where we choose a new winner every week.

*Email Address*

**Sign Up**

